

# WSM101 WIRELESS SERIAL MODULE



## INSTALLATION GUIDE

IG\_DINR\_WSM101\_E01A

# WSM101 WIRELESS SERIAL

## INSTALLATION GUIDE

### Table of contents

step  
**01**

**CONFIGURE WSM101 DEVICE**

Pages 3 to 5

---

step

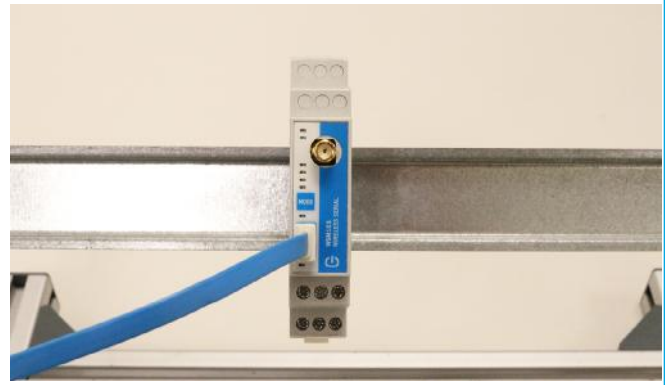
**01**

CONFIGURE WSM101 DEVICE

DOWNLOAD AND INSTALL "TEKON CONFIGURATOR" FREE SOFTWARE FROM TEKON ELECTRONICS WEBSITE

**01**

Connect the WSM101 to the Micro-USB cable.



**02**

Connect the Micro-USB cable to the computer.



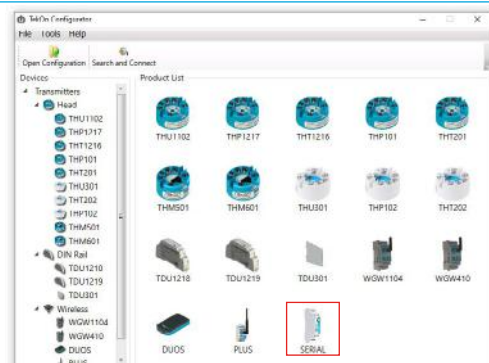
**03**

Execute Tekon Configurator software.



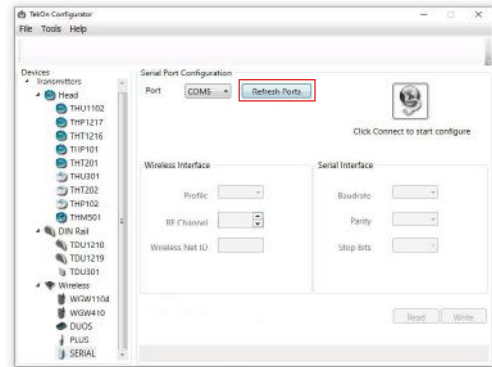
**04**

Select the "Wireless Serial" option.

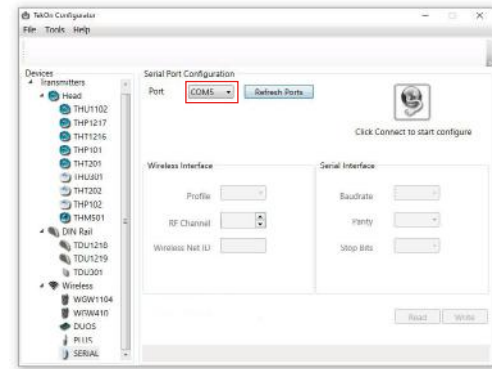


step  
**01** | CONFIGURE WSM101 DEVICE

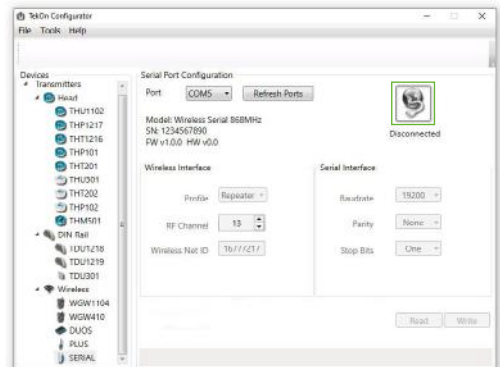
**05** Click on **Refresh Ports** button.



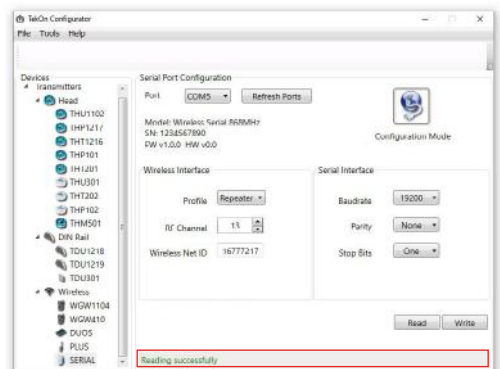
**06** Select the corresponding **Port**.



**07** Click on **Connect** (👤) button to enter configuration mode.



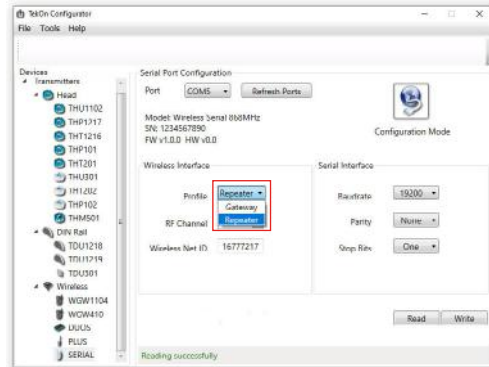
**08** The status string at the bottom of the software window provides feedback on ongoing operations.



step  
**01** | CONFIGURE WSM101 DEVICE

**09**

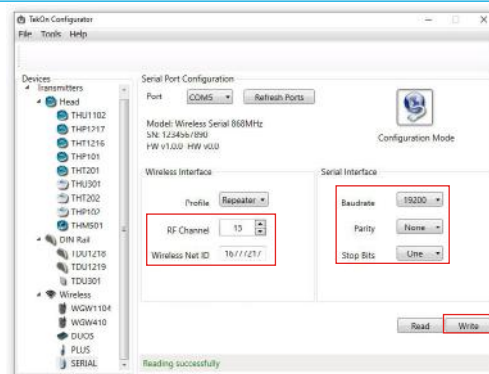
Tekon Configurator will recognize the default configuration. To set a gateway profile, choose the device profile **Gateway**.



**10**

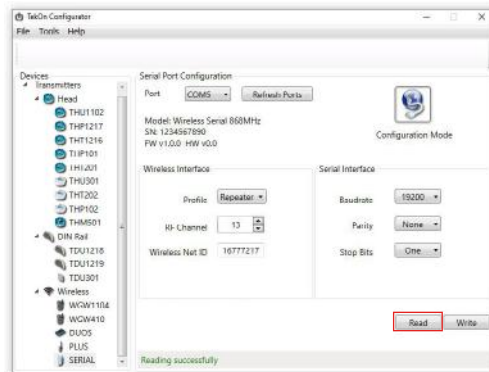
Choose the **RF Channel**, **Wireless Net ID**, **Baudrate**, **Parity** and **Stop Bits**.

Click on **Write** to save the changes.



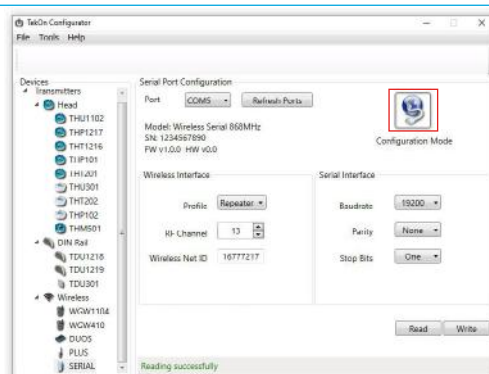
**11**

Click on **Read** to check the device current configuration.



**12**

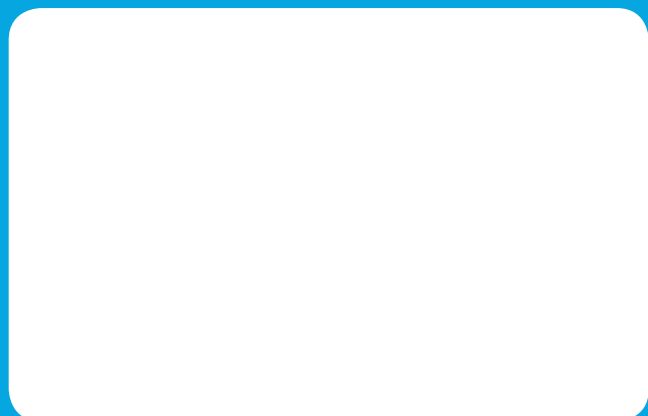
Click on **Configuration Mode** (🔄) to exit from configuration mode to normal mode.



TEKON ELECTRONICS  
a brand of Bresimar Automação S.A.

Avenida Europa, 460  
Quinta do Simão  
3800-230 Aveiro  
PORTUGAL

P.: +351 234 303 320  
M.: +351 933 033 250  
E.: sales@tekonelectronics.com



Cofinanciado por:



UNIÃO EUROPEIA  
Fundo Europeu  
de Desenvolvimento Regional